

RED LIGHT THERAPY (RLT)

Red light therapy (RLT) has been studied since the early 1990s by many scientists, including NASA, due to its inherent properties of promoting growth and photosynthesis. Subsequently, it is currently being studied for its potential applications in medicine. NASA's interest was relative to the ability of Light Therapy to treat muscle atrophy and bone density, both issues of weightlessness, during space travel.

RLT was then studied more extensively in the medical arena for its ability to effectively increase cellular metabolism, establishing it as an effective treatment for skin issues such as wrinkles, scars, persistent and non-healing wounds and other conditions. There are several types of red-light therapies like in red light beds found at salons which have shown to help reduce cosmetic skin issues such as wrinkles and stretchmarks. Red light works by producing a biochemical effect in cells that strengthens the mitochondria. The mitochondria are the powerhouse of the cell, where the cells' energy is created. The energy-carrying molecule found in the cells of all living things is ATP (adenosinetriphosphate).

When RLT is used in combination with Liposomal Methylene Blue (LMB), the LMB is photoactivated, subsequently increasing the function of the mitochondria exponentially and enhancing the production of ATP. With this greater energy cells can function more efficiently, rejuvenate themselves, (as in repairing damaged cells and removing the non-functioning cells), hence decreasing inflammation and swelling.

Take a few minutes to reach out to us for advice and answers to any questions you may have and/or request a demonstration of our remarkably effective and versatile devices.

A team of scientists from Harvard University has demonstrated that the application of laser light can trigger stem cells in the body to regenerate tissue. Mark Hawver, writing for Tech Times, explained how David J. Mooney, Ph.D., professor of bioengineering and his team used laser light to trigger human dental stem cells to form dentin.

Who is Advanced Light Devices, LLC (ALD)?

In 1998, Gene Barnett, CEO began his research into the universe of light based healing modalities and photonic cellular stimulation through the application of multiple wavelengths of light emitted in various forms and configurations using the latest and most efficient photonic emitters available.

ALD has assembled an extraordinary team of scientists, technologists, medical professionals, and forward-thinking conceptualists and inventors who have the focused goal of creating the very best and easiest to use light-based devices in the world.

Many companies' devices simply fail to deliver the optical density (power) necessary to penetrate to the target areas to activate and promote a proper cellular response in order that true healing may occur.

In addition to the numerous photo active substances which we have available for use in the field of Photo Dynamic Therapy, we can help you to create your own specially formulated photoactive substances for your specific needs.

THE REVOLUTIONARY THERALUMEN WEARABLE
IS AVAILABLE FROM



ADVANCED LIGHT DEVICES, LLC



*"It doesn't show the time, but it
may give you more of it!"*

WWW.ALDMED.COM

702-530-4913

INFO@ALDMED.COM

Gene@ALDMED.COM / C: 561-843-8900

Dennis@ALDMED.COM / C: 813-368-9570

A FEW USER REVIEWS

From Peter L. This is Peter L..... As per our phone conversation today I wanted to let you know about a benefit that I discovered with your TheraLumen LED device. I met you at the Advanced Healing Conference in Sioux Falls SD about a week ago.

When I went to the conference, I had an infected tooth and was told by the dentist that it would require a root canal. I tried treating it with essential oils including clove and oregano and chlorine dioxide with DMSO. None of these treatments worked.

So, I bought your Thera Lumen wrist LED device with the NanoBlu-liposomal methylene blue that you had at the show. I put the device partially in my mouth with the LEDs shining towards the tooth and gums. After using this for about 4 days the infection was completely gone. I am totally impressed.

Thanks for saving my tooth and eliminating the pain.

Peter

From Dennis T

I am an avid mountain bike rider. Prior to using the TheraLumen and NanoBlu-Liposomal Methylene Blue my rides were normal for me. Once I received my first 10cc bottle of NanoBlu I put 3 drops under my tongue, held it for 3 minutes prior to my ride. I noticed while riding I was breathing easier, going faster and my endurance increased a lot.

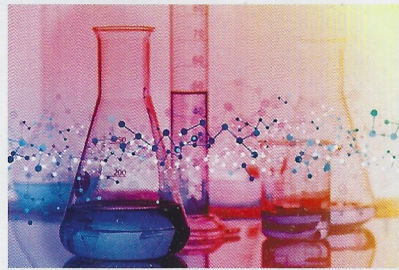
Then I received the TheraLumen, put 3 drops of NanoBlu under my tongue while wearing the TheraLumen for 20 minutes. I found my endurance increased dramatically, I was passing and keeping up with riders I have not been able to do before and had a lot of energy after my 3-to-3/12-hour ride.

Mary B

I had post Covid syndrome or hanger-on syndrome, along with sports-induced asthma. I use an inhaler when we break from riding. I nebulized NanoBlu while wearing the TheraLumen and never had to use my inhaler again! I had an increase in energy and stamina.

Amber B.

My 2 ½ year old daughter had an ear infection with a 103.5-degree fever. She was very lethargic and shaking. I put the TheraLumen on her wrist for 20 minutes. After 20 minutes she was a happy little camper with a 97.8 degree temperature. She was hungry and wanted to play peek a boo. Her fever never returned.



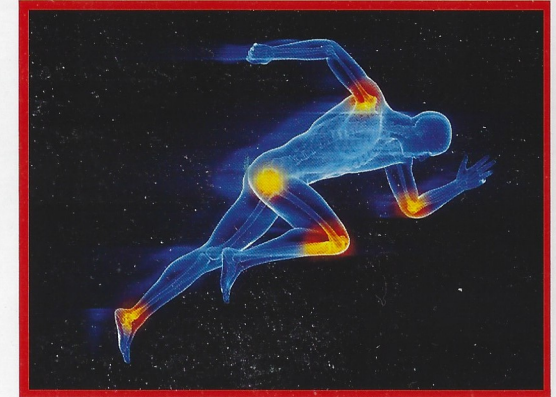
SOME HISTORICAL FACTS

Methylene blue has long been known as a dye for staining of tissue or nerve fibers, an effect first described by Paul Ehrlich in 1887. Methylene blue has been described as "the first fully synthetic drug used in medicine." Methylene blue was first prepared in 1876 by the German chemist Heinrich Caro.[44] Its use in the treatment of malaria was pioneered by Paul Guttman and Paul Ehrlich in 1891.

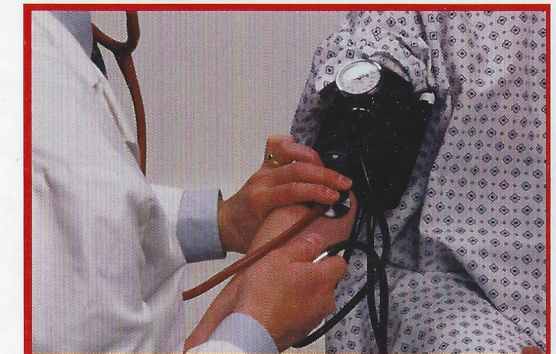
(This explains why our NanoMedTek NanoBlu, in combination with the Hemealumen Polychromatic Device was shown to be so effective in the treatment of malaria these past two years in Nigeria.)

Recent research has shown that methylene blue may be neuroprotective against several cytotoxicity related diseases such as stroke and Parkinson's disease to include High blood pressure as well. Methylene blue is an electron carrier, which allows it to function against malaria and methemoglobinemia, and is highly beneficial in cytotoxic situations in the brain as in cardiac tissue. It encourages cellular oxygen consumption and decreases anaerobic glycolysis. These benefits are highly relevant to conditions such as Alzheimer's disease, Parkinson's disease and stroke. Direct comparisons to anti-psychotic drugs, such as phenothiazine, showed that methylene blue has similar neuroprotective effects, but a different mechanism. Current research suggests methylene blue functions as a mitochondria specific antioxidant, as opposed to drugs such as phenothiazine which are free radical scavengers independently of the mitochondria.

MAY IMPROVE ATHLETIC PERFORMANCE



MAY LOWER BLOOD PRESSURE IN HYPERTENSIVE INDIVIDUALS



HELPS CELLS FLOW FREER



**MANY LOW POWER I.V LASER DEVICES AND
OTHER TOPICAL LASERS AND LED SYSTEMS
SIMPLY DO NOT DELIVER THE FOCUSED
ENERGY NECESSARY FOR TREATMENTS TO
BE EFFECTIVE.**

702-530-4913
INFO@ALDMED.COM
Gene@ALDMED.COM
Dennis@ALDMED.COM

702-530-4913
INFO@ALDMED.COM
Gene@ALDMED.COM
Dennis@ALDMED.COM